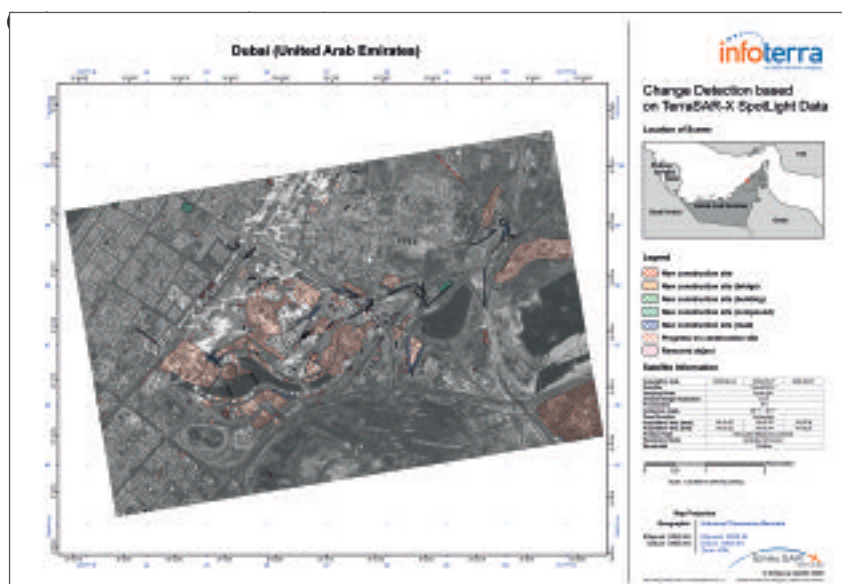


Application Areas

The range of applications is wide: Currently, customers rely on TerraSAR-X-based change monitoring over time in engineering (control of construction or dismantling processes, monitoring of infrastructure networks), urban planning (spatial planning, monitoring of illegally built-up areas, soil sealing), intelligence (remote site control, supervision of bilateral agreements), security (border control, airport/seaport monitoring) or environmental issues.



Change Detection Map of Dubai (UAE): The map identifies and classifies the changes detected between the end of April and early June 2008. It clearly documents the progress on some of the Emirates' most significant construction sites at the time

Technical Specifications:	
Thematic content	changes yes/no - annotations - assembly/dismantling
Geometric resolution/scale	1m, 3m or 18m (TerraSAR-X imaging modes)
Positional accuracy	< 1m
Update frequency	11 days or any multiple
Format of delivery	geotiff (raster), shape file (vector)
Type of data delivered	time series documentation via annotated SAR images, change maps, reports
Data sources used	TerraSAR-X

Infoterra GmbH

Headquarters
Mailing Address:

88039 Friedrichshafen
Germany

T. +49 (0)7545 8 4344
F. +49 (0)7545 8 1337

E. info@infoterra-global.com
www.infoterra.de

Visiting Address:
Claude-Dornier-Strasse
88090 Immenstaad
Germany

Production Center
WilhelmGalerie
Platz der Einheit 14
14467 Potsdam
Germany

T. +49 (0)331 2374 8400
F. +49 (0)331 2374 8427